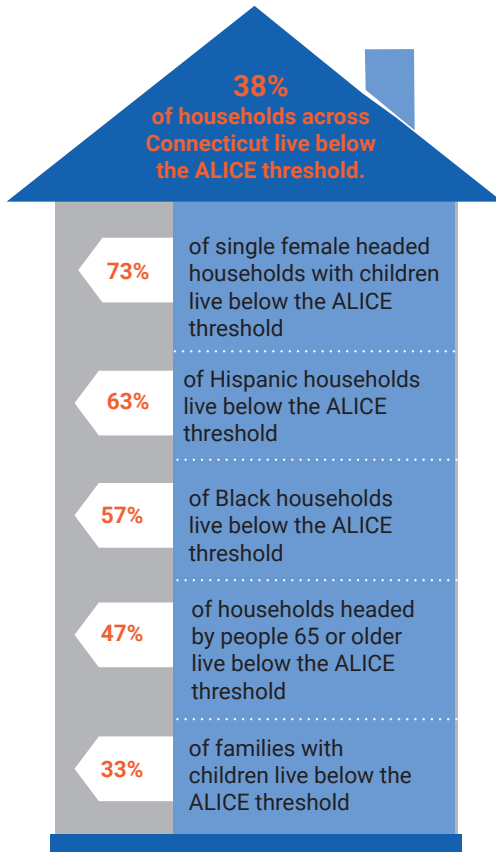


# CONNECTICUT UNITED WAYS



## 2021 POLICY AGENDA



Even before the onset of the COVID-19 Pandemic, 38% of Connecticut's households lacked the income to pay for necessities such as housing, food, child care, health care, technology and transportation. United Way calls these households **ALICE**, an acronym that stands for **A**sset **L**imited, **I**ncome **C**onstrained, **E**mployed. Connecticut United Ways are committed to helping **ALICE** families achieve a more secure financial future.

### DO YOU KNOW ALICE?

**ALICE** is the essential health care worker caring for our aging parents at home and for COVID patients in our hospitals. **ALICE** is the teaching assistant who helped our children adapt to virtual learning, or the bus driver who gets our kids to school. **ALICE** fixes our cars and works in our local shops and restaurants.

The COVID-19 Pandemic and resulting economic crisis has disproportionately impacted households living below the **ALICE** threshold.

### MAKE WORK PAY

- ✓ Restore the CT Earned Income Tax Credit (EITC) to at least 30% of a filer's federal EITC and expand eligibility of the EITC.
- ✓ **For every EITC dollar a recipient earns, they return \$1.24 to the economy.\***

### SUPPORT PARENTS AND CAREGIVERS WHO WORK

- ✓ Establish a state Child Tax Credit (CTC) to offset the cost of caring for a child or dependent with disabilities.
- ✓ **For every CTC dollar a recipient earns, they return \$1.38 to the economy.\***

### EXPAND ACCESS TO ESSENTIAL MEDICAL AND DENTAL BENEFITS

- ✓ Increase the eligibility income for HUSKY/Medicaid enrollment and allow young adults to receive dental coverage through their parents until age 26, creating a parity with medical insurance.

### UNITED FOR ALICE

**ALICE** households work, sometimes holding multiple jobs, yet still struggle to feed their families, ensure their medical care, maintain their housing and access affordable child care.

#### What can we do to help ALICE families?

A restored EITC and a CTC will provide needed flexible income for struggling families, while providing an important economic stimulus for our economy. Providing better access to affordable medical and dental care can improve health and relieve a portion of family financial burden.



[Click here to learn more about ALICE.](#) [Click here to Walk in ALICE's shoes at MakingToughChoices.org.](#)

\* Moody's Fiscal Multiplier Estimates

# WE STAND WITH ALICE®.

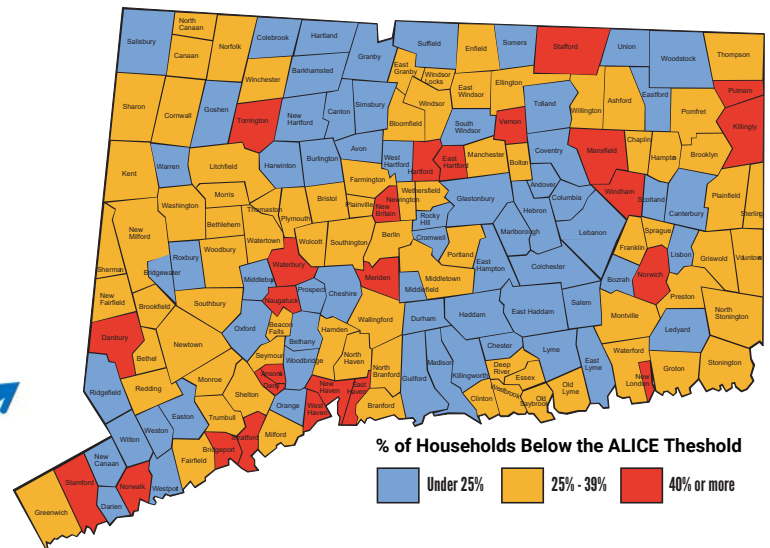
The existing safety net does not adequately support households that live below the **ALICE** threshold. Connecticut United Ways are committed to supporting **ALICE** and fighting for the health, education, and financial stability of all Connecticut residents.

With a focus on equity, Connecticut United Ways invest in child care and early learning, basic needs, job training, asset development, and financial education. We advocate for good jobs, fair wages, access to good schools and affordable housing. And we stand ready to help **ALICE** households when disaster strikes.

Click on the map to explore ALICE Data in your municipality and legislative district.



## ALICE LIVES AND WORKS IN EVERY TOWN



### FINANCIAL STABILITY

Access to good jobs, affordable housing, and asset-building resources will allow ALICE households to work towards a more secure financial future.

- Bridge the gap between stagnant wages and the growing cost of raising a family. Improve service delivery and better coordinate child care, job training, and work supports that will lead to success for the whole family.
- Support equitable pathways for career opportunities that meet employers' needs and provide wages that support families including through Connecticut's Workforce Strategic Plan.



### HEALTH

Social and economic factors (access to nutritious food, stable housing, reliable transportation, and mental health services) greatly influence ALICE's health outcomes. Access to preventive care is essential.

- Increase the income eligibility for HUSKY/Medicaid and expand access to affordable and quality health and dental insurance.
- Streamline access to health and human services, and provide coordinated and consistent access to services by maintaining and growing support for 211.



### EDUCATION

The path to a successful future begins with access to affordable, quality child care, opportunities for youth success, and the support needed to pursue a good education.

- Support more funding for early care and education and improve access to reliable, affordable and quality child care including through the State's Care 4 Kids childcare subsidy.
- Invest in systems that provide for children across all communities a clear path to economic prosperity through education; invest in initiatives that enable more children to perform at grade level.



If you have questions or would like to discuss this policy agenda, please contact:  
Ann Scully | United Way of Connecticut | (860) 571-7215 or [Ann.Scully@ctunitedway.org](mailto:Ann.Scully@ctunitedway.org)