

TOGETHER WE CAN LIVE UNITED



2022 COMMUNITY IMPACT REPORT

The Power of United Way's Network



United Way of Central and
Northeastern Connecticut

UNITED WE CAN!

Since my arrival to this United Way in February 2022, I have taken the time to listen and learn as much as I can. There is no doubt that this is a critical time in our history, and a time when the community needs United Way more than ever. Our organization was formed in 1924 to respond to the pressing needs of the time and I am proud to say that we are still doing that today.

Throughout the COVID-19 pandemic and the economic challenges that accompanied it, United Way has been working in innovative ways to help families by providing direct financial assistance through a mobile card program, bringing services virtual that used to only be available in-person and partnering in new ways with both the public and the private sector to meet the constantly evolving needs of our community.

Conditions continue to be challenging. As costs continue to rise, more people are struggling to make ends meet than before. Every new challenge also presents opportunity. As we approach our Centennial year of service, we have a responsibility to inspire our donors and volunteers to take action. We have an opportunity to work together to both build on our strong history while also innovating to make an even greater impact for the future.

While I look ahead, I am eager to engage stakeholders like you to solve relevant issues. This will be vital to United Way's evolution. Together, we will tailor impact to the most pressing needs of the community. My hope is to invite transformational giving to groundbreaking programs that are game-changing for struggling households.

Together, we can make futures brighter by creating lasting solutions to complex challenges and addressing immediate needs. Together, we can make life better for those who need help the most right now and improve community conditions for the well-being of children and families.

Current and future leaders live in every town across our region, and we are committed to authentically engaging with you as partners, donors and volunteers. We want to hear from you about ways we can work together to make our community stronger. Reach out to our team, share your ideas, attend an event or sign up to volunteer.

I am here to serve, and I am honored to be leading your local United Way at such a monumental time.

I am excited for the change we can and will create TOGETHER!



Kind regards,

A stylized, handwritten signature in black ink, appearing to read 'E. Harrison'.

Eric Harrison
President and CEO

United Way of Central and Northeastern Connecticut

United Way brings people and organizations together to do more than any of us can do on our own.



TABLE OF CONTENTS

2022 United Way Community Service Award.....	4
Impact on Workforce Development.....	9
Impact on Literacy.....	11
Impact on Financial Security.....	16
How Your Gifts Were Directed This Year.....	21
Statement of Financial Position.....	22
Statement of Activities.....	23
Board of Directors.....	28
Staff and Volunteers.....	28



SAVE THE DATE

FOR THE 2023 ALICE REPORT

COMING SPRING 2023.

HOW UNITED WAY WORKS.

1

MOBILIZE RESOURCES.

Convene and Unite:
Donors, Advocates, Volunteers, Community
Partners, Municipalities, School Systems and more.



2

ORGANIZE AND CONNECT.

Increase Equitable Opportunities to Succeed:
Youth Success, Family Financial Security,
Access to Health and Basic Needs.



3

CREATE LASTING CHANGE.

Identify:
Immediate needs and long-term solutions to
challenges facing children, adults and families.



**NO ONE PERSON OR ORGANIZATION CAN DO IT ALONE.
UNITED WAY'S NETWORK WORKS TOGETHER TO MEET
COMPLEX NEEDS OF PEOPLE IN OUR REGION.**

ARE YOU READY TO LIVE UNITED? JOIN US.

Contact Maura Cook at mcook@unitedwayinc.org
to learn about workplace giving campaigns.



2022 UNITED WAY COMMUNITY SERVICE AWARD

BUILDING FOUNDATIONS FOR A BRIGHTER FUTURE





HOW THE COMMERCIAL REAL ESTATE AND BUILDING INDUSTRY JOINED FORCES TO MAKE A DIFFERENCE

In 2019, Ed Kindelan, Mark Vasington and Dave Soule reached out to United Way with an idea to rally the commercial real estate and building industry in greater Hartford to address homelessness.

“For more than a decade, the commercial real estate and building industry has held an event in Boston, in partnership with United Way, to address homelessness. They have raised millions of dollars since the event began and have found a meaningful way to bring the industry together - that was inspiring to me,” said Ed Kindelan. “We have an incredibly strong industry of our own here in the greater Hartford region and I felt like we had a real opportunity to come together to do something really impactful for our own community.”

Hartford’s commercial real estate and building industry is filled with people who are



deeply committed to making a difference, not just through their work, but through their investment in philanthropy and service, as well. One of its most committed members, the late Jeff Digel, consistently inspired his colleagues to engage in building a brighter future for the next generation.



Eric Harrison, President and CEO, United Way of Central and Northeastern Connecticut, speaks from the podium at the 2nd Annual Building Foundations Breakfast.

“Jeff Digel had this quiet energy and enthusiasm that connected people to each other and their community in a way that was so inspiring,” said Dave Soule. “Everyone thought that they were Jeff’s best friend because he made every person he encountered feel important. He was extremely successful in our industry, and he gave his time to many causes, but the one that was most important to him was founding Covenant Preparatory School in Hartford. It was really important to us that we honored Jeff’s life and his legacy through this event, and we created the Jeffrey Digel Award, which will be given



Alan Lazowski, 2022 Jeffrey Digel Award recipient, receives a standing ovation at the 2nd Annual *Building Foundations* Breakfast.



annually to a member of our industry who embodies the characteristics that Jeff possessed. A portion of the proceeds will also be donated to Covenant Preparatory School in Jeff's name," added Soule.

To plan this event, Ed, Mark and Dave quickly brought together a committee of leaders from the commercial real estate and building industry. Just as they began, so did the COVID-19 pandemic.

"When the pandemic hit and the world shut down, we had an important decision to make," said Mark Vasington. "We had always envisioned our first-ever event being in-person. However, as the pandemic continued, we saw the need in the community increase dramatically and we felt like we had to move forward and do something to help, so we decided to hold our first event virtually."

The inaugural event, known now as *Building Foundations*, saw unprecedented success, attracting more than 70 sponsors and raising more than \$300,000 to prevent and

address homelessness in the community.

In 2022, the event was held in-person and raised more than \$420,000, quickly becoming United Way of Central and Northeastern Connecticut's largest fundraising event in just two years.

Dollars raised through *Building Foundations* support programs and services that provide emergency shelter and help prevent homelessness from occurring through diversion efforts.

Planning for 2023 is already underway and the event is poised to reach \$1 million raised collectively, just three years after inception.

Founding committee member Michael Riccio shared, "The work that this group does is contagious. This has quickly become THE event for our industry and it is a can't-miss opportunity. It feels good to do good, and to be able to do this with people that we work with day in and day out is a gift and one of the most impactful things I've been a part of. I can't wait to see what we do next."



BUILDING FOUNDATIONS

SAVE THE DATE

THE COMMERCIAL REAL ESTATE AND BUILDING INDUSTRY BREAKFAST:
BUILDING FOUNDATIONS

THURSDAY, MAY 4, 2023
HARTFORD MARRIOTT DOWNTOWN
7:30 – 9:30 A.M.

For more information,
contact Maura Cook at
mcook@unitedwayinc.org.

The Community Service Award is United Way's highest volunteer honor given annual in recognition of an individual or group who exemplify what it looks like to LIVE UNITED.

2023 BUILDING FOUNDATIONS COMMITTEE

Edmund Kindelan*

CohnReznick

Dave Soule*

Smith Brothers

Mark Vasington*

Retired,
First American Title Insurance Company

Michael Riccio*

CBRE

Mark Duclos*

Sentry Commercial

Nando Parete*

Cigna

Brian Zelman*

Zelman Real Estate

Melissa Ferrucci

CohnReznick

Chris Arnold

Liberty Bank

Jessica Dziob

Phase Zero

Randy Salvatore

RMS Investments

Mike Kolakowski

KBE Building Corporation

Barrie Deschaine

KBE Building Corporation

Jane Davey

LAZ Investments

James Lane

Webster Bank

Matt Halprin

New England Retail Properties, Inc.

Frank Apicelli

Carlton Fields

David Ingram

UBS

Gregory R. Faulkner

Robinson+Cole

* denotes Building Foundations Founding Committee Member



The Building Foundations Committee presents a contribution to Covenant Preparatory School in Jeff Digel's memory.

REMEMBERING JEFF DIGEL

Real estate combined Jeff Digel's interests in architecture, finance, geography and economic systems. As he built his career, Jeff was drawn to the investment side of the business. He co-founded and served as Executive Vice President for iStar Financial Inc., where he helped build the company's investment team and originated more than \$3 billion in structured finance assets. He went on to Figure Eight Properties forming a company that brought personal, concierge-level services to his clients. Jeff was equally committed to philanthropy and community action.

He was the co-founder and first chairman of the board of Covenant Preparatory School, an independent, interfaith, tuition-free middle school for boys from underserved families in the Hartford Area. Jeff also served on nonprofit boards for organizations including: Charter Oak Cultural Center, Hartford Area Habitat for Humanity and Achievement First Hartford Academy.

Annually, at *Building Foundations*, we pay tribute to our colleague and friend by presenting the Jeffrey Digel Award to a member of the industry that embodies the characteristics of Jeff's legacy.

2022 JEFFREY DIGEL AWARD RECIPIENT:

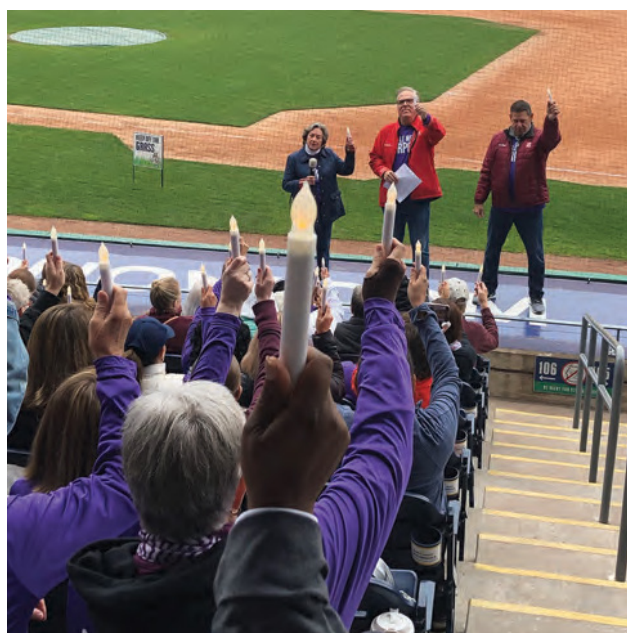
**ALAN
LAZOWSKI**

Chairman, CEO and Founder
LAZ Parking



United Way of Central and
Northeastern Connecticut

*Proud to partner with the United Way
to give victims of domestic violence a voice*



24-hour hotline • emergency safe house • safety planning & counseling
court advocacy • information & referrals • children's programming
English, Spanish & LGBTQIA+ support groups • community education

24-HOUR HOTLINE: 860-838-8467

LÍNEA DIRECTA EN ESPAÑOL: 844-831-9200

BUSINESS PHONE: 860-246-9149 • INTERVALHOUSECT.ORG •   **INTERVALHOUSECT**



Pictured (L-R): Monica Perez, Coordinator of Workforce Innovations at Connecticut Center for Advanced Technology, Inc.; Taniqua Huguley, Director of Economic Mobility, United Way of Central and Northeastern Connecticut; and, Charles Daniels, Chief Financial Officer, Wepco Plastics attend the National Fund for Workforce Solutions Summit.

**LAST YEAR,
TOGETHER WE
ENSURED 2,807
ADULTS OBTAINED
AND RETAINED JOBS
OFFERING WAGES
THAT SUSTAIN
FAMILIES AND
PROMOTE CAREER
ADVANCEMENT.**

**UNITED WAY IS PROUD TO
PARTNER WITH THE FOLLOWING
WORKFORCE SOLUTIONS
COLLABORATIVE INVESTORS:**

- American Savings Foundation
- Bank of America
- Hartford Foundation for Public Giving
- JPMorgan Chase
- Liberty Bank Foundation
- Middlesex United Way
- National Fund for Workforce Solutions
- Prudential Foundation
- State of Connecticut Department of Labor
- United Way Worldwide / Deloitte LLP

**Together, we can
strengthen the workforce
in our community.**

**Learn more about all the
ways United Way works
collaboratively to support
workforce development
at [unitedwayinc.org/
our-work](https://unitedwayinc.org/our-work).**

IMPACT ON WORKFORCE DEVELOPMENT

Connecticut United Ways' ALICE* Report, a study on financial hardship, demonstrates that the cost of living in Connecticut has far outpaced wages. United Way and our partners focus on ensuring that people in our region have access to in-demand jobs through training and education; and, at the same time, that employers have the talent they need to be successful.

Workforce Solutions Collaborative of Metro Hartford is a United Way-managed partnership that invests in employer-led and worker-centered approaches to connect job seekers to quality jobs with opportunities for advancement and earnings. We do this because when families earn more than enough to just make ends meet, they are more likely to be financially secure, achieve educational milestones and improve health outcomes.

As a result of the generosity of our donors and funders, United Way and our partners connect underemployed adults in our region with meaningful careers within local companies through programs, services and initiatives such as Workforce Solutions. To do this, we focus on industries important to the regional economy and on occupations identified by industry employers and confirmed by labor-market data. Our priority is to serve jobseekers facing

barriers to employment, such as women seeking to work in non-traditional careers, young adults, people of color and others who face challenges such as a past record of incarceration.

In September 2022, Charles Daniels of Wepco Plastics represented our region on the "Trauma and Resilience: How We Are Shifting Our Workplace" panel at the National Fund for Workforce Solutions Summit in Minneapolis, MN. Daniels has been a longtime leader within the Advanced Manufacturing Employer Partnership (AMEP) through Workforce Solutions. "It's an honor for me to partner with Workforce Solutions Collaborative of Metro Hartford on workforce development strategies and their implementation that have high impact in our region. The fact that these efforts have been nationally recognized highlights that these are best-in-class solutions that will help many people in our community," said Daniels.

Due to Daniels' leadership and commitment, Wepco Plastics has been recognized by the National Fund for Workforce Solutions as a "Frontline Forward" employer whose job practices have protected, supported and developed frontline workers throughout the pandemic and beyond.

* Asset, Limited, Income Constrained, Employed.

EMERGING LEADERS SOCIETY

CONNECT LEADERS. CULTIVATE RELATIONSHIPS.
CHANGE OUR COMMUNITY.

DO SOMETHING BIG!

ELS brings together local young professionals. As a member of ELS, you'll have regular opportunities to volunteer, raise awareness, support United Way's food insecurity initiatives and network with some of the most influential business leaders in the area.

WHAT OUR MEMBERS ARE SAYING.

"I'll never forget how much this experience has helped me grow as a leader, a person, a contributor and a community member."

– *2021 ELS Case Competition Team Member*

"Spending time with these young leaders, seeing them express their passion and creativity on solving real problems for our community, is inspiring and rewarding."

– *Pete Collins, Head of Operations, Travelers*



Scan here and follow us on social media to learn more about membership levels and benefits, our impact and how to get involved.

UNITED WAY
EMERGING
LEADERS SOCIETY

powered by:

ConnectiCare



@uwelsct

unitedwayinc.org/emergingleaders
#ELSDoSomethingBIG



Congratulations Food Fighters from Aetna, a CVS Health Company on winning the 2022 ELS Case Competition!

ELS CASE COMPETITION

LOOKING BACK.

Thanks to HSB's generous support, implementation for the 2021 *ELS Case Competition* winning campaign, "La cocina de mi abuela," is nearly complete! HSB's Team Steam United identified opportunities to bring the community together to reduce stigma around food insecurity through a public awareness campaign that includes a bilingual PSA, a community event and an inspirational neighborhood mural. HSB's investment will see the mural finished in 2022!



Scan here to see the progress.





IMPACT ON LITERACY



SINCE FALL 2020, NEARLY 6,300 CHILDREN IN HARTFORD HAVE BEEN REGISTERED FOR DOLLY PARTON'S IMAGINATION LIBRARY AND MORE THAN 50,000 BOOKS HAVE BEEN DISTRIBUTED.

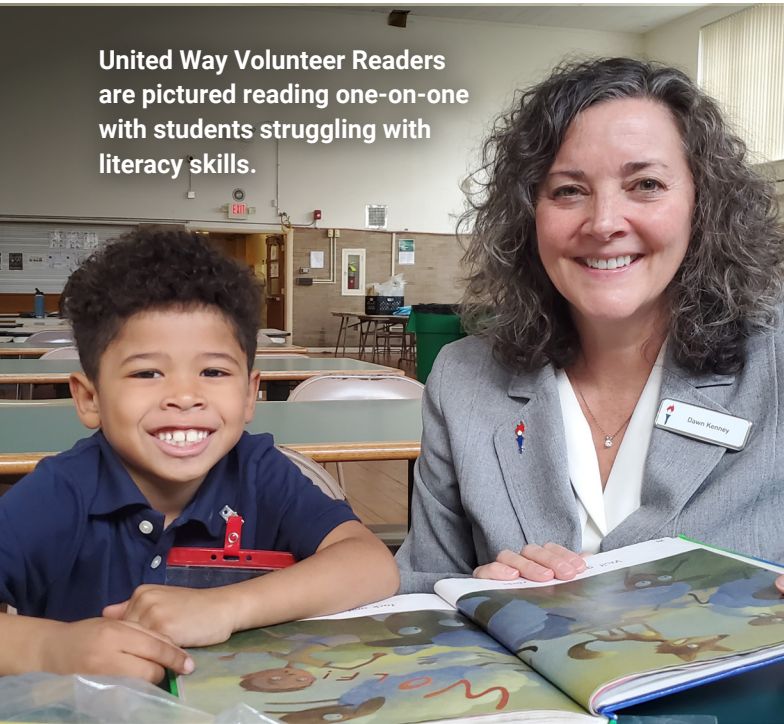


Eric Harrison, President and CEO, United Way of Central and Northeastern Connecticut reads to a group of children enrolled in a United Way-supported enrichment program which helps keep them on track academically during the summer months.

UNITED WE READ.

"You can never get enough books into the hands of enough children."

– DOLLY PARTON



United Way Volunteer Readers are pictured reading one-on-one with students struggling with literacy skills.

Dolly Parton's Imagination Library is a free subscription program that provides one book per month to Hartford children from birth to age five. These books are delivered directly to families to help build their home libraries.

Research shows that the earliest years of life can set the stage for physical development, mental health and academic success. Children are more likely to achieve critical milestones when they participate in consistent, enriching learning experiences; eat healthy food; and, have time for active play. Yet, for many children in our community, these opportunities are out of reach.

United Way is proud to be a champion for literacy across central and northeastern Connecticut. We provide access to quality early learning programs for children from birth to age five that help ensure they meet critical developmental milestones while also increasing their early literacy skills.

Looking forward, United Way,

in partnership with Connecticut Children's, is committed to maintaining Dolly Parton's Imagination Library in Hartford with a goal of expanding more broadly across our region.

We do not do this work alone and we cannot do it without you.
A GIFT OF \$40
provides an Imagination Library book to a local child each month for one year.

Together, we can help children succeed in school. Learn more about all the ways United Way works collaboratively to support youth academic success at unitedwayinc.org/our-work.



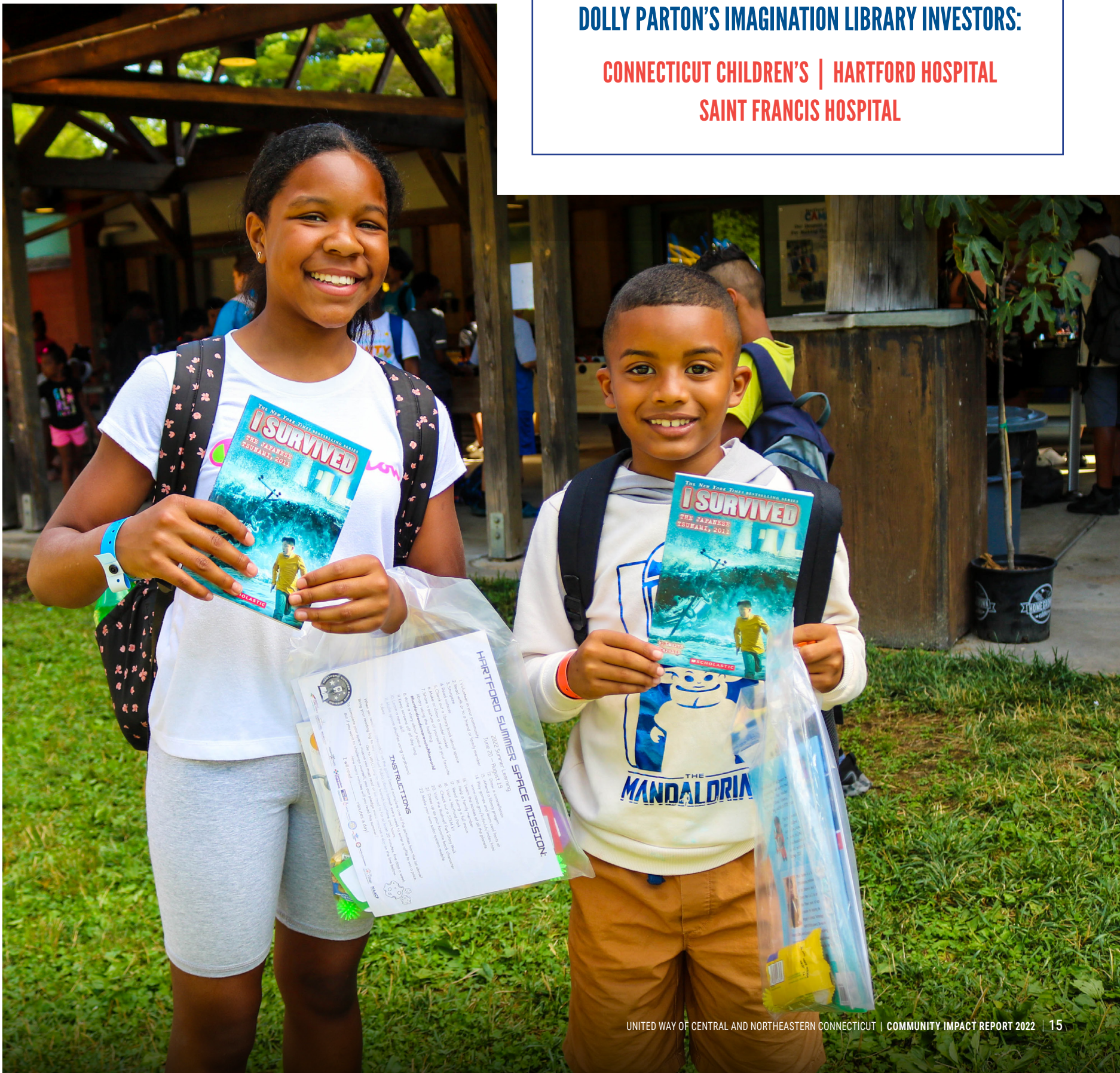


Jennifer Hernández registered her two sons, Gabriel (2) and Michael (4), for Dolly Parton's Imagination Library in early 2022. When we encountered the family again six months after enrolling, Hernández reached into her bag to show two brightly colored books that she shared had just arrived in the mail. She handed them to her sons, who brimmed with excitement at seeing their names on the mailing labels and were eager to point out their favorite parts of the stories.

"I carry Imagination Library books with me ... since they are guaranteed to hold [Gabriel and Michael's] attention. I have noticed their interest in books increase since they began receiving books from the Imagination Library program," Hernández said.

UNITED WAY IS PROUD TO WORK WITH THE FOLLOWING DOLLY PARTON'S IMAGINATION LIBRARY INVESTORS:

CONNECTICUT CHILDREN'S | HARTFORD HOSPITAL
SAINT FRANCIS HOSPITAL





**InterCommunity
Health Care**
Health Care for the Whole Person



Holiday Checklist

**GIVE THE GIFT
OF HEALTH,
PROTECTION
AND PEACE OF
MIND**

**To make an
appointment,
please call
860-569-5900**

Please note: Adults and children must wear masks when in the clinics.

*Make a list of those
you're buying gifts for*

*Stock up on
wrapping paper &
tape*

*Find a local
organization to
donate to for those in
need*

**Get your flu shot/COVID
vaccine at an
InterCommunity clinic**



**WE ACCEPT
MEDICAID**

Most insurances accepted.

**All services provided
regardless of ability to pay.
No one will be turned away.**



www.intercommunityct.org





LAST TAX SEASON, UNITED WAY MOBILIZED 259 VOLUNTEERS WHO RETURNED \$27.5 MILLION TO MORE THAN 10,000 FAMILIES ACROSS CENTRAL AND NORTHEASTERN CONNECTICUT.



KNOX
People Planting Programs

An ever-growing coalition of residents, volunteers, corporate partners and community organizations that actively support environmentally centered programs in Hartford.

And, very proud to be a United Way supported organization.

Learn more at www.knoxhartford.org



2022 Volunteer Income Tax Assistance (VITA) IRS-Certified tax preparers attended a recognition dinner after the tax season concluded.

IMPACT ON FINANCIAL SECURITY

United Way envisions a community where every family can achieve financial security. We know that stable household budgets help support positive health and education outcomes for children and youth. This is why we lead our region's Volunteer Income Tax Assistance (VITA) coalition alongside our trusted community partners, The Village for Families & Children and Human Resources Agency of New Britain, Inc. The VITA campaign provides no-cost tax preparation for hardworking ALICE* families with the goal to help people get ahead financially, pay down debt and work toward saving for the future.

* Asset, Limited, Income Constrained, Employed.

Give. When you give to United Way, you are investing in programs, services and initiatives, such as VITA, that support families as they get on a pathway toward financial security.

In addition to the generous contributions made by supporters like you that are critical to making lasting change, United Way and our partners secured a federal grant through the Office of Minority Health in 2020 to perform a three-year study on the benefits of the Earned Income Tax Credit (EITC). This grant makes it possible for our VITA coalition to help more families claim the

EITC, which returns more money to ALICE families who, after being hit hard from the pandemic and inflation, could use this tax credit to catch up financially.

Sign up for our e-newsletter, follow @unitedwayinc on social media and check our website regularly for updates as we continue this study through late 2023.

Advocate. Last tax season, Connecticut United Ways and our partners successfully advocated for an enhanced Connecticut EITC of 41.5 percent, up from 23.0 percent, and a child tax credit of \$250 per child for up to three children.

Gather55
NOURISH • CONNECT • GIVE

55 BARTHOLOMEW AVE, HARTFORD

RESERVATIONS RECOMMENDED:
VISIT [GATHER55.COM](https://gather55.com) OR CALL 860.929.2316

*Gather55 harnesses the
power of delicious food to
connect communities*

**FINE DINING.
DONE DIFFERENTLY.**

Gather55 is a mission-based initiative of Hands On Hartford

dinner schedule

WED-SAT, 5:30-8:30PM

PRIX FIXE MENU

MENU CREATED BY TYLER ANDERSON OF MILLWRIGHT'S
DECEMBER'S GUEST CHEF: BILLY GRANT





VITA volunteers pose for a picture at the VITA Volunteer Recognition Dinner.



Laura O'Keefe, Director of the Financial Opportunity Center at The Village for Families & Children, gets interviewed on Dollars & Sense Day.

Our VITA coalition joined a national press conference with United States Vice President Kamala Harris’ office to advocate for the benefits of the Child Tax Credit and its impact on local families.

We also are grateful for members of United Way Women United who tirelessly raise awareness and resources to advocate for ALICE families across our region.

Volunteer. VITA volunteers obtain IRS certification and are trained to help ALICE

households claim all of the refunds and credits they have earned, such as the EITC, Child Tax Credit, Child Tax Rebate and more. No previous experience is required.

Will you join us?

Together, we can ensure local families achieve financial security. Learn more about all the ways United Way works collaboratively to support families at unitedwayinc.org/our-work.

****ALICE** is a United Way-coined acronym that stands for **A**sset **L**imited, **I**ncome **C**onstrained, **E**mployed. Learn more at alice.ctunitedway.org.*



Pictured L-R: Hector Glynn, Chief Operating Officer, The Village for Families & Children; Laura O'Keefe, Director of the Financial Opportunity Center, The Village for Families & Children; Paula S. Gilberto, Immediate Past President and CEO, United Way of Central and Northeastern Connecticut; Juan Berrios, Assistant Director of Operations, Human Resources Agency of New Britain, Inc.; Mike Fournier, VITA Coordinator, The Village for Families & Children; and, Steven Diaz, Economic Mobility Senior Manager, United Way of Central and Northeastern Connecticut.



YWCA New Britain Preschool is now enrolling children age 3-5 in our affordable Preschool Program!

Enrolling children from Hartford, Newington, Berlin, Plainville, Bristol, and New Britain!

Only at YWCA New Britain will your child have:

- Grandparent Partnership Program
- Childrens Yoga and Mindfulness
- Emphasis on Scientific Learning
- Storytelling through Music
- School Readiness
- Children’s Dance

Classes available in English, Spanish and Arabic



Learn More!



UNITED WAY CONSTITUTION SOCIETY.

Constitution Society members are leading the way in making real, measurable impact on issues facing people locally. Members of this exclusive United Way Society come from diverse backgrounds and careers, using their generosity, time and talent to create real, lasting change in the lives of local adults, children and families. The Society connects people, along with their passions, to collectively make our region a better place.

“The greatness of a community is most accurately measured by the compassionate actions of its members.”

- CORETTA SCOTT KING



Scan here and follow us on social media to learn more about membership levels and benefits, our impact and how to get involved.

   
@unitedwayinc
unitedwayinc.org/constitution
#LIVEUNITED

PRUDENCE CRANDALL CENTER

Empowering Healing & Hope since 1973



“The first day I moved into the apartment in transitional housing, it was such a great feeling – that finally I have a place, finally, I’m not homeless. I really don’t have family here, but they are my family. I’ve learned the most important thing is for the kids to be in a safe, peaceful environment. I’m so thankful that Prudence Crandall is in my life.”

-PCC Housing Resident

Caring
Compassion
Advocacy
Community

Expert, comprehensive domestic violence services
for survivors, their children, & the community

24-Hour Helpline:
888-774-2900

Emergency Shelter
& Crisis Services

Groundbreaking Supportive
Housing Programs

Counseling &
Support Groups

Victim Advocacy:
Civil & Criminal Court

Community
Education & Prevention

Give the Gift of Healing, Hope,
& A Safe, Peaceful Home
Please Donate Today



www.PrudenceCrandall.org
P.O. Box 895 | New Britain, CT 06053
Carolyn Jasper, Chief Development Officer:
cjasper@pccdv.org | 860-259-3817
Connect With Us! Facebook  Instagram 

WHO IS THE IDEAL VITA VOLUNTEER?

No prior experience required.

Eager to learn. You don't need to be a tax expert!

Can volunteer four hours per week.

Friendly and enjoys helping people.



Interested in volunteering?
Visit unitedwayinc.org/volunteer.



FREE Professional Tax Help \$\$\$\$\$\$\$\$

Get help from an IRS-certified volunteer:

If your household income is up to \$60,000, **dial 2-1-1, press 3 then 6** OR:
Greater Hartford and Windham Region residents, visit 211ct.org/taxhelp.

Greater New Britain Region residents, visit 211ct.org/taxhelp.

File on your own online: Prepare and file your taxes at MyFreeTaxes.com.

Online help is available.

Ayuda profesional y gratis para preparar sus impuestos \$\$\$\$\$\$\$\$

Reciba la asesoría de un voluntario certificado del Servicio de Impuestos Internos (IRS, por sus siglas en inglés): Si el ingreso de su núcleo familiar es de hasta \$60,000, **llame al 2-1-1 y oprima el número 3 y después el número 6** O:

Residentes del área de Hartford y la región de Windham, visite 211ct.org/taxhelp.

Residentes del área de New Britain, visite hranbct.org/vita.

Presente su declaración usted mismo por Internet: Prepare y presente sus impuestos en MyFreeTaxes.com. Encontrará ayuda disponible en Internet.



HOW TO LIVE UNITED:

JOIN HANDS. OPEN YOUR HEART.

LEND YOUR MUSCLE. FIND YOUR VOICE.

GIVE 10%. GIVE 100%. GIVE 110%.

GIVE AN HOUR. GIVE A SATURDAY.

THINK OF *WE* BEFORE *ME*.

REACH OUT A HAND TO ONE

AND **INFLUENCE** THE CONDITION OF ALL.



UNITED WAY TOCQUEVILLE SOCIETY.

Tocqueville Society members are philanthropic leaders who, through generous gifts of treasure, demonstrate their commitment to tackling our community's most pressing problems and creating sustainable positive change. The Society is named after the 19th-century French political thinker and historian Alexis de Tocqueville who, in his writings, recognized the importance of voluntary action on behalf of the common good. The Society is dedicated to developing a stronger sense of community and connection among local philanthropists through engagement opportunities that grow awareness of issues and solutions affecting the well-being of children and families in our community and networking with like-minded individuals.

Members of our local Tocqueville Society automatically become members of United Way Worldwide's Tocqueville United, a society comprised of philanthropic leaders from throughout the United Way global network.

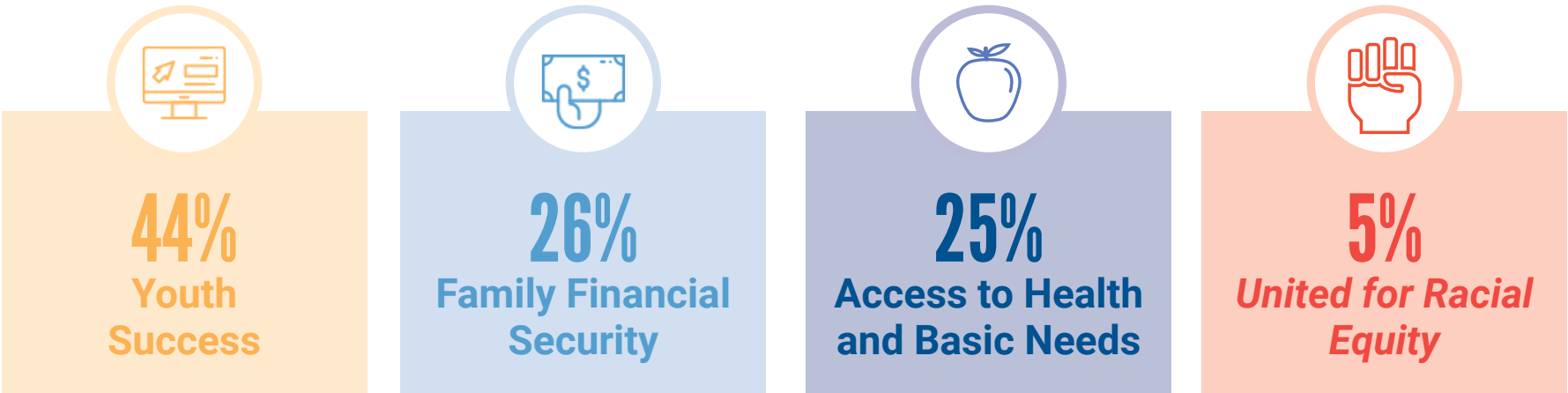


   
@unitedwayinc
unitedwayinc.org/tocqueville
#LIVEUNITED

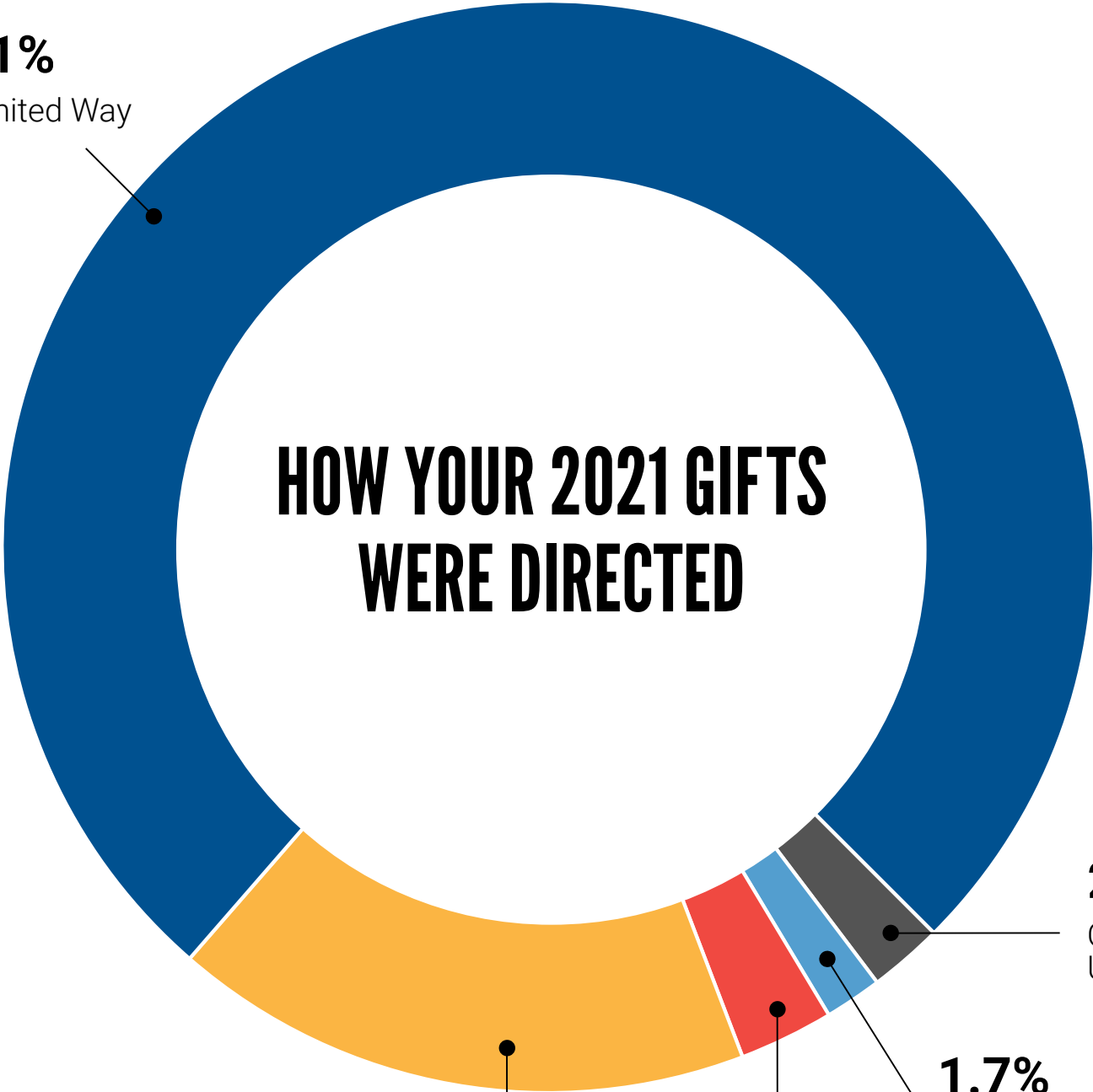
Scan here and follow us on social media to learn more about membership and benefits, our impact and how to get involved.



HOW YOUR GIFTS WERE DIRECTED THIS YEAR



76.1%
Our United Way



2.2%
Other United Ways

1.7%
United Way's Philanthropy Fund

2.8%
Designations to Our Partner Agencies

17.2%
Other 501(c)(3)s

STATEMENT OF FINANCIAL POSITION | JUNE 30, 2022

Assets

Cash and cash equivalents	\$3,810,566
Pledges receivable, net of estimated uncollectibles	1,403,097
Other receivables	234,502
Investments	15,865,340
Investments held in trust by others	7,112,131
Prepaid expenses and other assets	107,260
Plant and equipment, net	653,842
Total assets	\$29,196,738

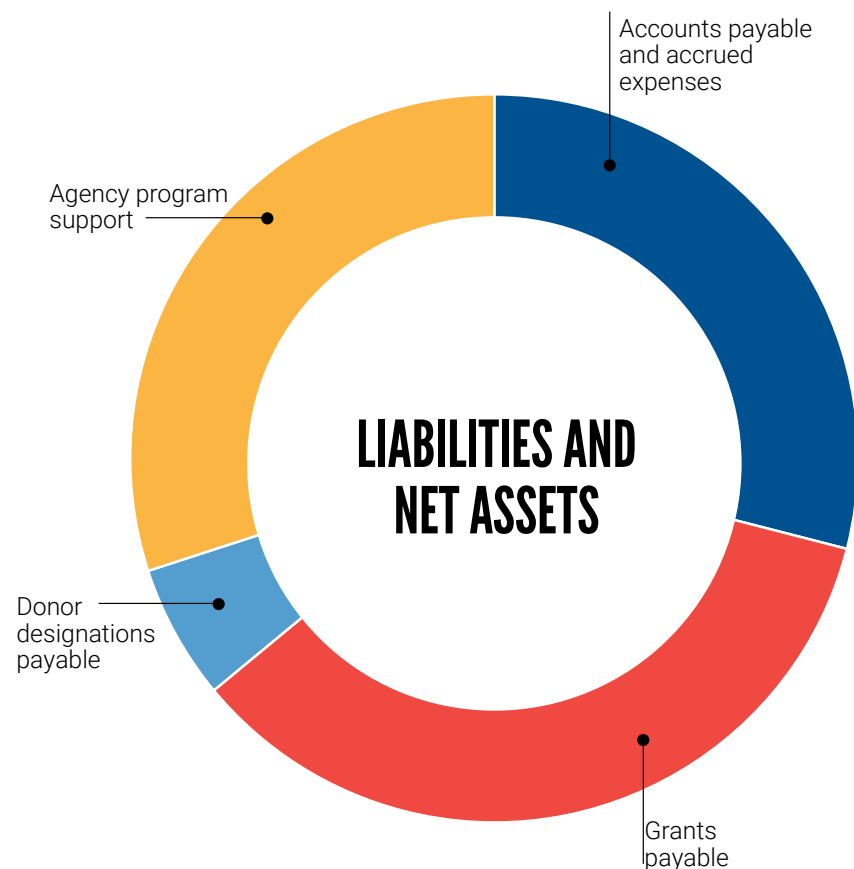
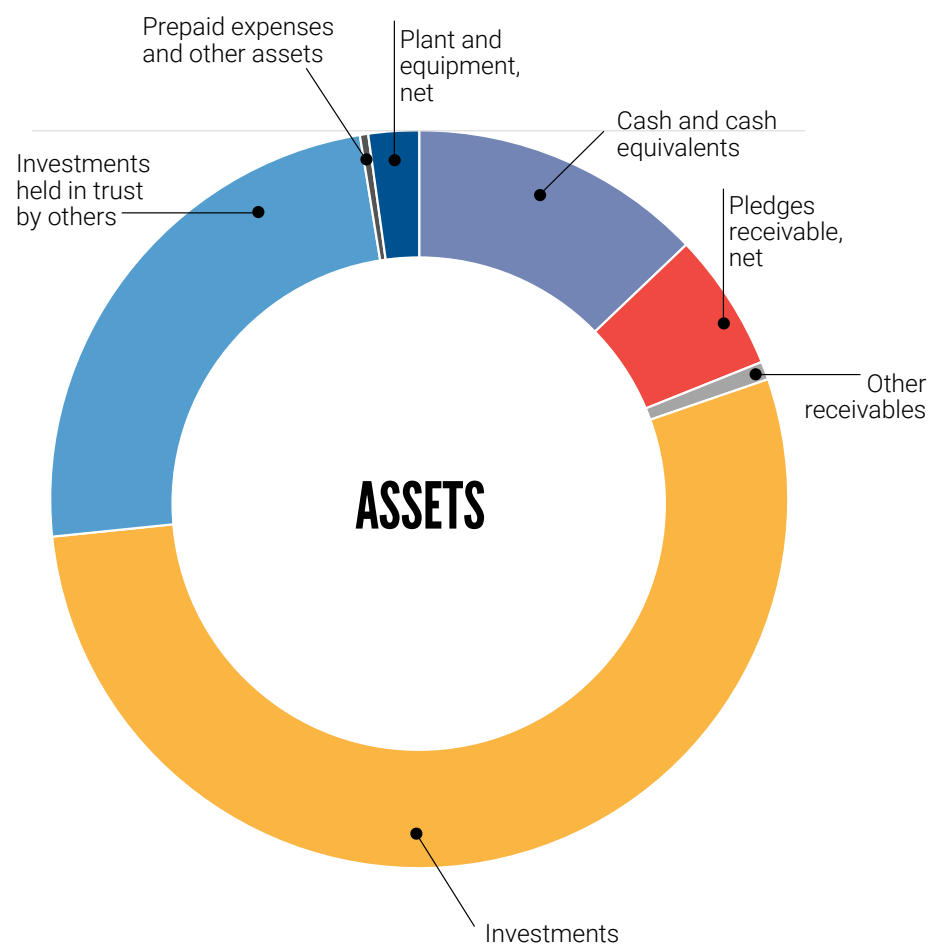
Liabilities and Net Assets

Accounts payable and accrued expenses	\$2,427,827
Agency program support payable	2,843,698
Donor designations payable	474,312
Grants payable	2,304,487
Total liabilities	\$8,050,324

Net assets

Without donor restrictions	\$12,521,495
With donor restrictions	8,624,919
Total net assets	\$21,146,414

Total liabilities and net assets	\$29,196,738
---	---------------------



STATEMENT OF ACTIVITIES | JUNE 30, 2022

Campaign amounts raised	\$7,809,179
Add:	
Contributions from other United Way campaigns, net of donor designations	58,437
Less:	
Uncollectible pledges	(303,177)
Amounts designated by donors	(1,470,424)
Net campaign revenue	<u>6,094,015</u>
Other revenue:	
Investment income, net of fees	508,762
Income from trusts held by others	530,866
Community grants, initiatives and service income	1,602,963
Administrative fees on amounts raised on behalf of others	35,006
Rental income	101,363
Gifts in kind	66,904
Miscellaneous revenues	<u>1,942,824</u>
Total other revenue	<u>4,788,688</u>
Total public support and revenue	\$10,882,703
<i>Community Investment</i> and program services:	
Community support and gross funds distributed	\$3,706,166
Less:	
Amounts designated by donors	(1,470,424)
<i>Community Investment</i> (program support)	<u>2,235,742</u>
Grants and initiatives	1,331,535
<i>Community Investment</i> services	<u>1,540,544</u>
Total <i>Community Investment</i> and program services	<u>5,107,821</u>
Support services:	
Resource development	2,098,428
Management and general	<u>1,465,764</u>
Total support services	<u>3,564,192</u>
Total <i>Community Investment</i>, program and support services	\$8,762,013
Operating Surplus (Deficit)	2,210,690
Non-operating revenues and expenses:	
Gains/(losses) from sale of investments	114,950
Gains/(losses) on disposal of assets	
Change in Unrealized Gains/(losses) on Investments	(4,055,345)
Pension Related Changes	28,662
Change in net assets	(1,701,043)
Net assets, beginning of year	22,847,457
Net assets, end of year	\$21,146,414



**YWCA
IS ON A
MISSION.**



Grateful to have partnered with **United Way of Central and Northeastern Connecticut** over the years to deliver programs and services and to advocate for racial justice and gender equity in the Hartford Region.

Join Us!

UNITED WAY WOMEN UNITED



@wuforuwct
unitedwayinc.org/women
#WomenUnited



WE ARE WOMEN UNITED.

We are a diverse, vibrant community, bound together by a powerful sense of belonging – to each other, to United Way’s mission and to the communities we call home. Women United is a global, growing force of 70,000+ women dedicated to creating a world of opportunity – for everyone.

WE IGNITE CHANGE.

Financial struggles affect families’ health and children’s education. Women United members empower each other to use our passions, ideas, expertise and resources to help women and families in our community achieve financial security.

WHAT OUR MEMBERS ARE SAYING.

“Through Women United, I have been able to learn about our wonderful community and do my small part to help uplift and support families. I have also grown professionally and have a better understanding of how to lead in a way that brings heart to what matters most. To top it all off, the networking and friendships built along the way have been life-changing!” – *Erica Dean, 2022 Chair, Women United*



Scan here and follow us on social media to learn more about membership levels and benefits, our impact and how to get involved.

ANNOUNCING: UNITED WAY WOMEN OF TOCQUEVILLE.

Women of Tocqueville is a transformative group of committed business, civic and philanthropic women leaders dedicated to helping their neighbors in need and stabilizing families struggling to make ends meet through engagement opportunities to tackle challenges and create sustainable change for ALICE* families.

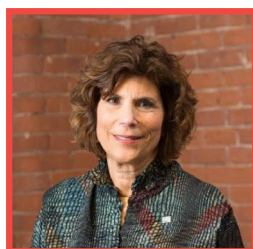
Membership is exclusive to women who donate \$10,000 or more annually through the United Way Community Campaign, of which a minimum of \$5,000 is invested in United Way Women of Tocqueville to support programs and priority projects to improve the well-being of children and families in our community.

*ALICE is a United Way-coined acronym that stands for Asset Limited, Income Constrained, Employed

The first 50 women to become a Women of Tocqueville member will be recognized as **Founding Members into perpetuity.** We would like to recognize the first six women to join this new society:



Irene Bassock



Susan Dunn



Paula S. Gilberto



Vittoria Pace



Vi R. Smalley, Esq.



Janis Turner

Learn more and get involved by contacting **Kim Reeves, Director of Leadership and Major Giving**, at kreeves@unitedwayinc.org.

“I am honored to serve as a founding member of Women of Tocqueville. This group of committed leaders in our region will accelerate progress towards families achieving financial security through our philanthropy and advocacy. We hope that you will join us in making meaningful change for local families and building a brighter future for everyone.”
- Vittoria Pace, Chair, United Way Board of Directors and Founding Member, Women of Tocqueville

Thank you to our *Year of Caring* Sponsors.
Your commitment to our community exemplifies
what it means to LIVE UNITED!



THANK YOU!

United Way is grateful to have the support of 200 companies across our region, United for the well-being of local children and families.



Accenture
ACCESS Community Action Agency
Advancing Connecticut Together (AIDS CT)
Aetna, a CVS Health Company*
AFT Connecticut
Alliance Bernstein
Allstate Insurance Company
American Eagle Financial Credit Union*
American Nuclear Insurers
Amica Mutual Insurance Company
Andersen Corporation
Avangrid
Bank of America
Barnes Aerospace
Berlin Board of Education
Berlin Town Departments
Big Y Foods, Inc.
Boys & Girls Club of Hartford, Inc.
Bucher Emhart Glass, Inc.
C & S Wholesale Grocers, Inc.
Campbell Soup Company
Capital Workforce Partners
Capitol Region Council of Governments (CRCOG)
Caterpillar
Catholic Charities Inc., Archdiocese of Hartford
Centene (Envolve PeopleCare)
Chase Enterprises
Cigna
Citizens Bank of Connecticut
City of Hartford
City of New Britain
Clark Household
CohnReznick LLP
Collins Aerospace*
Comcast
CommScope Technologies, LLC
Conagra
ConnectiCare, Inc. & Affiliates*
Connecticut Children's
Connecticut Foodshare
Connecticut Public
Connecticut Wealth Management
Conning*
Consolidated School District of New Britain
CopperPoint Mutual Insurance Company
Costco Wholesale, Inc.
Coventry Public Schools
CREC
Cronin, LLC
CT Center for Advanced Tech (CCAT)
Day Pitney LLP
Deloitte LLP
East Hartford Public Schools
Easter Seals Capital Region & Eastern CT
Eaton Corporation (Electrical Sector)
EDM
Educational Resources for Children, Inc.

Elevance Health
Eli Lilly & Company
Enterprise Holdings
Ethel Walker School
Eversource
Farmington Public Schools
FedEx Ground
Fifth Third Bank
Gannett Fleming Affiliates, Inc.
General Dynamics Corporation
Gilbane Building Company
Glastonbury Board of Education
Global Atlantic Financial Group
Greater Hartford Legal Aid
Guardian Life Insurance Company
Hanover Insurance Group
Harc, Inc.
Hartford HealthCare
Hartford Public Library
Hartford Public Schools
Hartford Yard Goats*
Harvard Pilgrim Health Care
Hedberg Data Systems, Inc. (Steelcase)
HEDCO, Inc.
Hinckley Allen and Snyder LLP
Hispanic Health Council, Inc.
Hooker & Holcombe Consulting
HSB*
Hypertherm, Inc.
IBM Corporation
IMCORP*
InsurBanc
International Union UAW
Interval House, Inc.
Ion Bank Foundation
ITW Permatex
Jackson Laboratory
JAM Industries
JC Penney
Johnson Controls, Inc.
KeyBank
KPMG LLP
LabCorp
Liberty Bank
Lincoln Financial Group
Literacy Volunteers of Greater Hartford
Local Initiatives Support Corporation
Manchester Public Schools
Manpower

Microchip Technology - Microsemi
Microsoft Corporation
Milliman
M&T Bank
My Sisters Place, Inc. - CT
Nassau Financial Group
Nationwide Insurance
Navigate Affordable Housing Partners
NBC Universal
NelNet - Great Lakes
New England Combined Federal Campaign
Northwestern Mutual Life Insurance Company
Nutmeg Big Brothers Big Sisters
OKAY Industries
Opportunities Industrialization Center of New Britain, Inc.
Otis
Our Piece of the Pie
PeoplesBank*
Pfizer Corporation
Pitney Bowes, Inc.
Pratt & Whitney*
PricewaterhouseCoopers LLP
Prudence Crandall Center
Prudential Financial
Raymond James & Associates, Inc.
Raytheon Technologies*
Raytheon Technologies Research Center (RTRC)
Re-Center Race and Equity in Education
Reid and Riege PC
Reservoir Financial
Robinson+Cole
Roche Diagnostics Corporation
Rockwell Sales Office
Salvation Army of Greater Hartford
Selective Insurance Company
Sentry Insurance
Sexual Assault Crisis Center of Eastern CT, Inc.
Shipman & Goodwin LLP
South Windsor Board of Education
Spring Brook Service, Inc.
Stanley Black & Decker, Inc.
Starling Physicians
Sun Life
Target Stores
TD Bank

The Arc of Farmington Valley
The Hartford*
The Hutensky Group
The Principal Financial Group
The Village for Families & Children, Inc.
Thomaston Savings Bank
Timken Aerospace Transmissions, LLC
Tolland Public Schools
Tolland Town Departments
Town of Coventry
Travelers*
Trinity College
Triumph Group Integrated Systems - Electronics & Control
Truist
U.S. Bank
UAW International Local 376
United Performance Metals
United Way of Connecticut, Inc./211
UnitedHealthcare (UnitedHealth Group)
University of Hartford
UPS
Urban League of Greater Hartford, Inc.
Vantis Life Insurance Company
Virtus Investment Partners
Vistra Energy (EquiPower Resources Corporation)
Voya Financial
Wabtec Corporation
Walmart
Webster Bank*
Westfield Insurance Company
Westinghouse Electric Company
Whittlesey
Wiggin & Dana, LLC
Willis Towers Watson
Windham Area Interfaith Ministry
Windham Public Schools
Windham Town Employees
Windsor Federal Savings
Women's Health USA
Women's League, Inc. Child Development Center
WordCom*
YMCA of Greater Hartford
YWCA Hartford Region
YWCA New Britain

*Year of Caring Sponsor



BOARD OF DIRECTORS

OFFICERS

Vittoria Pace
*Chair**
The Hartford

Michael J. Auseré
*Treasurer**
Eversource

Donald Allan, Jr.
*Immediate Past Board Chair**
Stanley Black & Decker, Inc.

Eric Harrison
President and Secretary
United Way of Central and
Northeastern Connecticut

BOARD

Charles W. Bogoian
Kenai Sports

Shawn J. Maynard*
Windham Hospital Foundation

Julia Johnson Brinson
Immediate Past Chair
United Way Women United
Avangrid

Colleen A. McGuire
Silver Fern Healthcare, LLC

Natalie B. Morris*
Raytheon Technologies

Peter Collins
Travelers

James P. O'Meara*
Webster Bank

Shellye Davis*
Co-Chair
2022 United Way Community Campaign
Greater Hartford Labor Coalition
AFL-CIO

Roshan N. Patel
Citizens Bank

Timothy Restall, Jr.
Hartford Yard Goats

Erica Dean
Chair
United Way Women United
Comcast

Patrick Sampson
AFSCME Council 4

Antonio Santiago
Connecticut Department of Labor

Venton B. Forbes*
InterCommunity, Inc.

Jennifer L. Shanley
Robinson+Cole

Vi R. Smalley, Esq.*
Conning

Susan C. Freedman
Shipman & Goodwin LLP

Donna L. Sodipo
YWCA Hartford Region

Beatriz Gutierrez
CONNSTEP, Inc.

Richard J. Tavolieri
Deloitte LLP

Neti Guzman
Prudential Financial

Maureen Waterston
Pratt & Whitney

Courtney Jinjika
KeyBank

Sharon Williams
HSB

Robert A. Kosior
Canton

Steven M. Litchfield*
Co-Chair
2022 United Way Community Campaign
TD Bank

*Executive Committee Member

STAFF AND VOLUNTEERS

COMMUNITY SERVICE AWARD COMMITTEE

Chester Paul Beach, Jr.
Granby

Ms. Naomi McKoy
Upper Albany
Neighborhood Collaborative

Thomas Burke
Saint Francis Hospital-
Trinity Health Of New
England

Bimal Patel
Hartford Hospital-
Hartford HealthCare

Eric D. Daniels
Robinson+Cole

Karen Perham-Lippman
Lumen

Janet Flagg
Brainbridge Island, WA

**Wayne S. Rawlins M.D.,
M.B.A.**
Wellspark Health

Robert F. Leduc
Retired
Pratt & Whitney

Dr. James E. Shmerling
Connecticut Children's

ADVOCACY COMMITTEE

Michael Goldbas
Chair
Retired

Patrick McGloin
Gaffney Bennett and
Associates, Inc.

Donald Allan, Jr.
Stanley Black & Decker,
Inc.

James P. O'Meara
Webster Bank

Venton B. Forbes
InterCommunity, Inc.

Vittoria Pace
The Hartford

Susan C. Freedman
Shipman & Goodwin LLP

Donna L. Sodipo
YWCA Hartford Region

AUDIT COMMITTEE

**Erica M. Czajkowski,
C.P.A.**
Chair
Deloitte LLP

**James LaCroix, Jr.,
C.P.A.**
CohnReznick LLP

**Crystal A. Germanese,
C.P.A.**
Blum Shapiro

Christine A. MacIsaac
Middlebury, VT

Sharon Williams
HSB

BENEFITS AND COMPENSATION COMMITTEE

Marin Lorenson, Chair
The Hartford

Susan C. Freedman
Shipman & Goodwin LLP

Christopher Blish
KPMG

James Martin
Barnum Premier Client
Group

Kate Bocash
Stanley Black & Decker, Inc.

Natalie B. Morris
Raytheon Technologies

Erica Dean
Comcast

Roberto Rosario
Retired

Anthony Denniston
Liberty Bank

Jill Vichi
Pratt & Whitney

2022 BUILDING FOUNDATIONS STEERING COMMITTEE

Edmund Kindelan <i>Chair</i> CohnReznick LLP	Melissa Ferrucci CohnReznick LLP
David Soule <i>Chair</i> Smith Brothers Insurance, LLC	Matt Halprin New England Retail Properties, Inc.
Mark Vasington <i>Chair</i> First American Title Insurance Company	Nando Parete Cigna Investment Management
Frank Appicelli Carlton Fields	Michael J. Riccio CBRE
Mark Duclos Sentry Commercial	William Wrang Webster Bank
	Brian Zelman Zelman Real Estate

COMMUNITY ENGAGEMENT COMMITTEE

John A. Soos, Jr. <i>Chair</i> Pratt & Whitney	Michael Goldbas Retired
Isabel C. Ceballos Ethel Walker School	Robert G. Nims Cigna
Kristen L. Donato Pratt & Whitney	Kimberly Silcox Hartford HealthCare

COMMUNITY INVESTMENT STEERING COMMITTEE

Sara-Beth Sidla <i>Chair</i> Lincoln Financial Group	Matthew McCormack ZoomInfo
Charles W. Bogoian Kenai Sports	Kimberly Silcox Hartford HealthCare
Mario D. Conjura M&T Bank	Mary Stuart Trinity Health Of New England
Elizabeth Gagne Travelers	Nancy Velez Connecticut State Department of Education

UNITED WAY WOMEN UNITED STEERING COMMITTEE

Erica Dean <i>Chair</i> Comcast	Karmela Malone The Hartford
Neelam Arora The Hartford	Vittoria Pace The Hartford
Julia Johnson Brinson Avangrid	Laurie Palmer HIMCO/The Hartford
Isabela Danielsen Pratt & Whitney	Juliene Phelan The Hartford
Julie DeLucca-Collins Go Confidently Services	Stephanie Polzella The Hartford
Marianne Downie The Hartford	Tisa Rabun-Marshall Nassau Financial Group
Karen Fitzgerald The Hartford	Jennifer L. Shanley Robinson+Cole
Brenda Jones Otis	Vi R. Smalley, Esq. Conning
Heather Krisolofsky The Hartford	Janis Turner Travelers

UNITED WAY EMERGING LEADERS SOCIETY STEERING COMMITTEE

Stephanie Berman HSB	Mackenzie Manning Leonardo DRS
--------------------------------	--

RED, WHITE & CHOCOLATE STEERING COMMITTEE

Juliene Phelan <i>Chair</i> The Hartford	Amanda Lupfer The Village for Families & Children
Julia Johnson Brinson Avangrid	Laura Pels Retired
Isabela Danielsen Pratt & Whitney	Stephanie Polzella The Hartford
Erica Dean Comcast	Sarah Toomey Pratt & Whitney
Prati Kaufman Prati Kaufman Coaching LLC	Janis Turner Travelers

POWER OF THE PURSE STEERING COMMITTEE

Judy Casperson <i>Co-chair</i> KeyBank	Marianne Downie The Hartford
Jennifer L. Shanley <i>Co-chair</i> Robinson+Cole	Elisa Gorton Hartford HealthCare
Robin Allen The Hartford	Kristin Herzog Travelers
Julia Johnson Brinson Avangrid	Prati Kaufman Prati Kaufman Coaching, LLC
Isabela Danielsen Pratt & Whitney	Melissa O’Hara O’Hara Solutions Group
Erica Dean Comcast	Laurie Palmer The Hartford
Michelle DeCarlo Newington	Laura Pels Retired
	Elise Sinha Hartford HealthCare

ELS CASE COMPETITION COMMITTEE

Alondre Rush <i>Chair</i> HSB	Trevis Farver Cigna/Evernorth Technology
Ryan Baldassario UConn School of Public Policy	Matthew Jerr Comcast
Allison Estey Cigna	Alaina Washington Pratt & Whitney

FINANCE COMMITTEE

Michael J. Auseré <i>Chair</i> Eversource	Lindsay Sliva Travelers
Steven C. Erickson Whittlesey PC	Richard J. Tavolieri Deloitte LLP
Lauren Scarlata Aetna, a CVS Health Company	

HARTFORD COUNTY EMERGENCY FOOD AND
SHELTER PROGRAM – LOCAL BOARD

- Kristin Brisbon**
Chair
United Way of Central and
Northeastern Connecticut
- Mary-Jo Adams**
Salvation Army, Southern New
England Division – CT & RI
- Liz Buczynski**
United Way of Central and
Northeastern Connecticut
- Lori Butenas**
Town of East Windsor
- Cody Daigle**
Jewish Family Services
- Lynn Fairfield-Sonn**
American Red Cross, Connecticut
and Rhode Island Division
- Beth Ferrari**
Avon Congregational Church
- Barbara Lazarski**
Friendship Service Center
- Matt Morgan**
Journey Home
- Marie Mormile**
Catholic Charities, Archdiocese
of Hartford
- Christine O’Rourke**
Connecticut Foodshare
- Brett Sandman**
Salvation Army, Southern New
England Division – CT & RI
- Beth Stafford**
MACC Charities

INVESTMENT COMMITTEE

- Christopher Wilkos**
Chair
Retired
- Michael P. Hermsen**
Naples, FL
- David J. Jorgensen**
The Jorgensen Group at Morgan
Stanley
- Alan S. Kosan**
Segal Marco Advisors
- Charles L. Olson**
People’s United Wealth
Management

NOMINATING AND GOVERNANCE COMMITTEE

- Vi R. Smalley, Esq.**
Interim Chair
Conning
- Nancy Bernstein**
Women’s Health USA | Women’s
Health CT
- Donna Collins**
Hartford Business Journal
- Shawn J. Maynard**
Windham Hospital Foundation
- Vittoria Pace**
The Hartford
- Karen Prendergast**
Greater Hartford Labor
Coalition AFL-CIO

UNITED WAY OF NEW BRITAIN AND BERLIN REGIONAL ADVISORY BOARD

- Charles Bogoian**
Chair
Kenai Sports
- Donald DeFronzo**
Retired
- Mary Floyd**
City of New Britain
- Jessica Hernández**
Central Connecticut State
University
- Brad Palazzo**
Comcast

UNITED WAY OF NORTH CENTRAL CONNECTICUT
REGIONAL ADVISORY BOARD

- Karen Bauer**
360 Federal Credit Union
- Robert Earley**
Comcast
- Heidi Gilmore**
Town of Windsor Locks

WINDHAM REGION UNITED WAY
REGIONAL ADVISORY BOARD

- Antonio Santiago, Jr.**
Chair
Connecticut Department of
Labor
- Jose Aponte**
University of Connecticut
- Michelle Beeckman**
Sleep Number
- Mario D. Conjura**
M&T Bank
- Paola Fonseca-Fernandez**
Centreville Bank
- Betti Kuszaj**
Northeast Connecticut
Chamber of Commerce
- YukShan Li**
Town of Windham
- Lana O’Connor**
Eastern Connecticut State
University
- Daniel Paquette**
Windham Public Library
- Kimberly Silcox**
Hartford HealthCare
- Angela Smart**
Liberty Bank

2022 YEAR OF CARING SPONSORS

- Gold Sponsors**
Travelers
- Silver Sponsors**
ConnectiCare
HSB
IMCORP
Pratt & Whitney
- Bronze Sponsors**
Aetna, a CVS Health Company
Collins Aerospace
Conning
The Hartford
Raytheon Technologies
Webster Bank
WordCom

UNITED WAY STUFF THE BUS SPONSORS

- American Eagle Financial
Credit Union
- Hartford Yard Goats
PeoplesBank

PROGRAM AND EVENT
SPONSORS/PARTNERS

2022 POWER OF THE PURSE

- Presenting Sponsor**
KeyBank | Key4Women
- Keynote Sponsor**
The Hartford
- Network Sponsor**
Pratt & Whitney
- Silent Auction Sponsor**
Robinson+Cole
- Media Sponsor**
Comcast
- Platinum Sponsors**
Collins Aerospace
Sun Life
- Gold Sponsors**
HSB
Stanley Black & Decker, Inc.
Travelers
- Silver Sponsors**
Conning
- Hartford HealthCare
Moses Tax Group
Talcott Resolution
The Village for Families &
Children
Virtus Investment Partners
- Bronze Sponsors**
Aetna, a CVS Health Company
Connecticut Center for
Advanced Technology
CLA
Centreville Bank
Connecticut Wealth
Management, LLC
Day Pitney LLP
Deloitte LLP
Goings Family Law
Immediaship
Leading Culture Solutions
Marsh McLennan Agency
Prudential
Shipman & Goodwin
Untapped Potential

2022 RED, WHITE & CHOCOLATE

Cabernet Presenting Sponsor
Sun Life

Rosé Sponsor
KeyBank | Key4Women

Pinot Noir Sponsors
Comcast
Marianne Downie
Hartford HealthCare
PeoplesBank
Pratt & Whitney
The Village for Families & Children

Merlot Sponsors
Suzanne Cormier
Moses Tax Group
Juliene Phelan
Travelers Women & Allies
Diversity Network

Chardonnay Sponsors
Ashley and Brandon Born
Erica Dean
Del Soul Spa
Divine Restoration
Eliana Spa
Go Confidently Services
Karen Hinds
InsurBank
Damien and Stephanie Polzella
Putnam Plaza Super Liquors
The Hartford Windsor HUB
Janis Turner

2022 ELS CASE COMPETITION

Aetna, a CVS Health Company
Cigna
Comcast
ConnectiCare
Hartford HealthCare

HSB
HYPE
PeoplesBank
UConn School of Business
UConn School of Public Policy

STAFF AS OF OCTOBER 31, 2022

Eric Harrison
President and CEO

Jennifer Gifford
Senior Vice President

Maura Cook
Vice President
Marketing and Development

Helen M. Bergin
Human Resources Manager

Katelyn Blackburn
Marketing Senior Manager

Philip Blonski
Corporate Engagement Senior Manager

Kimmy L. Boulier
Finance Administrative Assistant

Kristin Brisbon
Community Impact and Engagement Operations Director

Rebekah Castagno
Corporate Engagement Senior Manager

Anyeline Céspedes-López
Digital Marketing Manager

Rosemarie Church
Data Processor

Amanda Cohen
Graphic Designer and Production Manager

Joanne Cohen
Executive Assistant to the Office of the President

Diana Desnoyers
Community Impact and Engagement Senior Manager

Steven Diaz
Economic Mobility Senior Manager

Gina Federico
Health Initiatives Director

Kimberly Evans
Development Administrative Assistant

Tatiana Gay
Corporate Engagement Manager

Kayla Hernández
Finance Manager

Taniqua Huguley
Economic Mobility Director

Enrique Juncadella
Workforce Solutions Director

Tiauna Laing
Controller

Karen Moran
Marketing and Engagement Administrative Assistant

Amy Nguyen-Le
Database Manager

Mark Olynciw
United WE READ Manager

Joemari Ortiz
Human Resources and Accounts Payable Coordinator

Lauren Pereira
Women United Manager

Shirvani Piersa
Major Gifts Officer

John Prescod
Director of Literacy Initiatives

Kimberly Reeves
Leadership and Major Giving Director

David Reeves
Corporate Engagement Manager

J. Robert Williamson
Corporate Engagement Senior Manager

CONSULTANTS AS OF OCTOBER 31, 2022

Bob Bernaducci
Marketing Communications

Juan Colon
Young Legends – Economic Mobility

Aleena Durant
Young Legends – Economic Mobility

Virgen Guadarrama
Impact and Engagement

Naomi Lerner
Marketing Communications

Allyson McGinty
Impact and Engagement

Gail Millerick
Marketing Communications

Devonn Smith
Young Legends – Economic Mobility

Donna Taglianetti
Economic Mobility

INTERNS AS OF OCTOBER 31, 2022

Ranya Alboslani
Impact and Engagement

Samuel Giguere
Impact and Engagement

Jeannette Pacheco
Impact and Engagement

Jordan Pita
Marketing Communications

DEDICATIONS

Stephen Becker
in honor of Paula S. Gilberto

Susan Castaldo
in memory of Linda Dodge Van Damme

ConnectiCare
in memory of former late President Mickey Herbert

Susan and Ned Dunn
in memory of Earl Schofield

Donna Kidwell
in memory of Janice Carlson - whose career was dedicated to teaching young children

Lori Liberti
in honor of Dr. Martin Luther King, Jr.

Francis Nkrumah
in honor of God

John Perretta
in memory of Earl Schofield

Ruby Stephens
in honor of John Langley

Christoph Van Damme
in memory of Linda Dodge Van Damme

Isabelle Van Damme
in memory of Linda Dodge Van Damme

Laurence Willis, Jr.
in memory of Laurence Willis, Sr.

THANK YOU!

United Way is proud to work hand-in-hand with 60 trusted community partners across our region. Together, we can ensure children succeed in school and families achieve financial security.



ACCESS Agency
American Red Cross
Boys & Girls Clubs of Hartford, Inc.
Camp Courant
Catholic Charities & Family Services,
Diocese of Norwich, Inc.
Catholic Charities, Inc. - Archdiocese of
Hartford
CCARC, Inc.
Center for Children's Advocacy
Center for Leadership and Justice
Community First School
Community Renewal Team
COMPASS Youth Collaborative, Inc.
Connecticut Coalition to End
Homelessness
Connecticut Foodshare
Connecticut Legal Services, Inc.
Connecticut Women's Education and
Legal Fund
ConnectiKids
Consolidated School District of New
Britain
East Hartford Public Schools
Educational Resources for Children, Inc.

Generations Family Health Center, Inc.
Greater Hartford Legal Aid, Inc.
Hands On Hartford
HARC, Inc.
Hartford HealthCare at Home
Hartford Interval House, Inc.
Hispanic Health Council, Inc.
Hockanum Valley Community Council
Human Resources Agency of New
Britain, Inc.
InterCommunity, Inc.
John J. Driscoll United Labor Agency
Journey Home
KNOX, Inc.
Literacy Volunteers of Central
Connecticut
Literacy Volunteers of Greater Hartford
Local Initiatives Support Corporation
Network Against Domestic Abuse of
North Central CT
Nutmeg Big Brothers Big Sisters
Opportunities Industrialization Center of
New Britain, Inc. (OIC)
Our Piece of The Pie (OPP)
Pathways/Senderos

Prudence Crandall Center, Inc.
Services for the Elderly of Farmington
Sexual Assault Crisis Center of Eastern
Connecticut, Inc.
South Park Inn, Inc.
The Arc of the Farmington Valley, Inc.
(FAVARH)
The Salvation Army Southern New
England Division
The Village for Families & Children, Inc.
United Way of Connecticut, Inc.
Urban League of Greater Hartford, Inc.
URISE Ventures, Inc.
Watkinson School
Windham Area Interfaith Ministry
(WAIM)
Windham Public Schools
Windham Regional Community Council,
Inc.
Women's League, Inc. Child
Development Center
YMCA of Metropolitan Hartford, Inc.
YMCA of New Britain - Berlin
YWCA Hartford Region
YWCA of New Britain, Inc.



UNITED WE CAN!

United Way is your trusted partner to achieve your organization's employee engagement and corporate responsibility goals.



United Way is proud to partner with 200 corporations and businesses committed to our region. Our partners contribute ideas, volunteers, support and are helping build a stronger community. Contact us today!



United Way of Central and Northeastern Connecticut

SAVE THE DATES!

JOIN US and help support United Way by attending an upcoming event.
Check out unitedwayinc.org/events to learn more!



RED, WHITE & CHOCOLATE

FEB. 16



BUILDING FOUNDATIONS

MAY 4



*LIVE UNITED
GOLF TOURNAMENT*

MAY 22



POWER OF THE PURSE

JUNE 8



ELS CASE COMPETITION

SEPT. - DEC.



UNITED WAY YEAR OF CARING

ONGOING

